

INTRODUCING THE NEW STANDARD IN AFFORDABLE TOPOGRAPHIC NEUROMAPPING:

Mindset 24

24 Channel Topographic Neuromapping Instrument

Mindset is a 24 channel Electroencephalographic (EEG) neuromapping system designed for use with a personal computer. Mindset combines topographic neuromapping and EEG analysis software with a 24 channel, 512 samples-per-second 16 bit digital EEG acquisition instrument to provide a complete EEG neuromapping system.

An Open Standard

Mindset is based on a completely open software architecture. Third-party developers and end users have unlimited access to extend or customize Mindset. In addition, Mindset's data record format is an open and published standard.

Realtime Topographic Neuromap Rendering on PC

Mindset provides a comprehensive and intuitive suite of tools for understanding EEG in the temporal, spectral, and spatial domains. Features such as realtime topographic visualization, neurometric profile comparative analysis, compressed spectral array visualization, inter-electrode interpolation, metric report generation, and artifact removal integrate to provide a clear prospective of patterns in the EEG data.

In the Laboratory or in the Field

Mindset interfaces to the computer via SCSI, a standard that works as well with a desktop computer as it does with a notebook. An all aluminum enclosure, sized to match the footprint of a notebook PC, ensures durability and isolates Mindset from environmental interference.

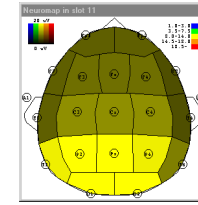


Mindset24

Mindset24 was designed by Nolan Computer Systems, L.L.C. for demanding field research. After years of continuous development and refinement, Mindset emerges onto the market as a robust and comprehensive tool for EEG study.

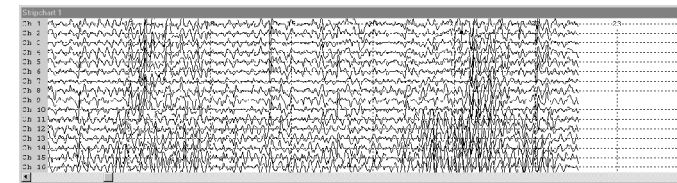
Realtime Topographic Neuromaps

Amplitude threshold and range are under user control.



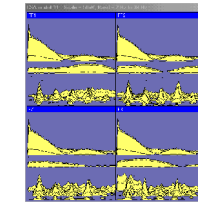
Strip Chart Waveform Display

Channels of interest, sweep rate, amplitude scale, trace color and background color are configurable on-the-fly.



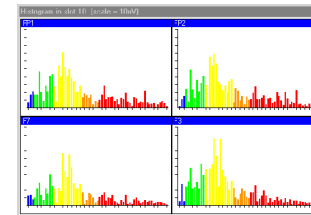
Compressed Spectral Array

Realtime visualization of spectral data with on-the-fly configuration of channels of interest, amplitude and screen layout.



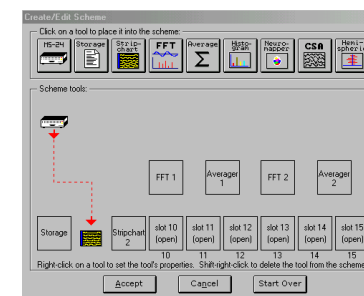
Spectral Histogram

User configurable realtime display with on-the-fly control of channels of interest, amplitude scale and channel layout.



Scheme Editor

Create unique schemes containing the tools most appropriate for the task at hand. Click and drag simplicity.



NOLAN
NOLAN COMPUTER SYSTEMS, L.L.C.
 30540 Rand Road
 Conifer, CO 80433
 303-816-1782
 wayne@nolancomputersystems.com

SPECIFICATIONS

Channels

24 differential input channels (48 input jacks)
 Uses the new 1.5 mm touch-proof connectors

Resolution

16 bit analog to digital converter
 64, 128, 256 or 512 samples/second/channel

Amplifiers

- Gain: 36,000 (91 dB), typical
- Pass band: 1.4 Hz - 35 Hz (-3 dB)
- Two 4th-order Sallen-Key active filters, 48 dB/octave roll-off
- CMRR: 120 dB maximum, 100 dB typical 60 Hz rejection
- Noise: < 300 nano-volts (RMS), inputs shorted

Input Range

0 - 120 microvolts

Electrodes

Standard electrode inputs, compatible with Electro-cap & e-Net

Montage Reference Configuration

User selectable through the Expansion Connector
 Two Linked-ear Referential modules supplied
 Standard 10-20 supported

Interface to Host Computer

SCSI (Standard Centronics 50 pin connectors)
 Compatible with desktop/laptop computer systems

Opto-Isolation

2500 volts RMS

Total Harmonic Distortion

-87dB
 99.9% linearity in the opto-isolators

Calibration

Factory calibrated
 Optional calibration certificate available
 Optional calibration hardware available

Power

110/220 volts, 50/60 Hz input
 15 watts power consumption

Operational Temperature

32 to 90 degrees F.

Dimensions and Weight

13 inches deep, 17 inches wide, 3.9 inches high
 Main unit: 8 pounds External power supply: 2 pounds

Warranty

Mindset is warranted to be free of defects which affect proper operation for a period of one year.

System Requirements

Pentium Class running Windows 95/98/ME/NT/XP.
 SCSI interface, 8 megabytes of RAM, 20 megabytes of available hard drive space. For real-time neuromapping a processor speed of 200 Mhz or higher.

Optional Accessories

Calibration certificate, calibration hardware,
 SCSI interface card, Electro-cap.

Copyright © 2003 Nolan Computer Systems, L.L.C. All Rights Reserved. Mindset is a trademark of Nolan Computer Systems, L.L.C. Features and specifications are subject to change without notice. Weights and measurements are approximate. Windows, Windows NT, Electro-cap and e-Net are trademarks of their respective trademark holders.

Nolan Computer Systems, L.L.C. makes no claims as to potential medical or therapeutic benefits.

