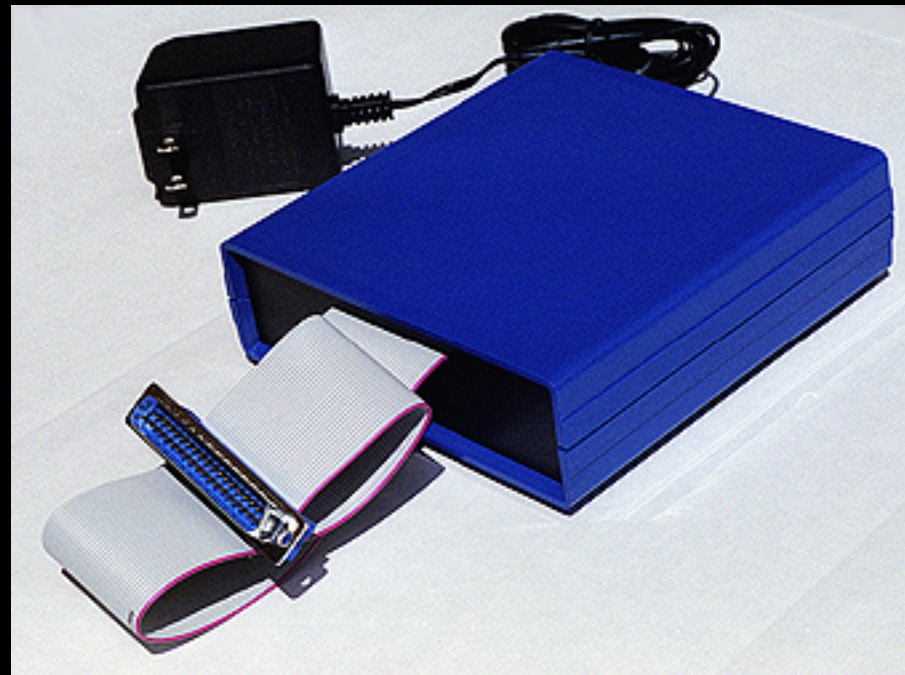


MINDSET MS - 1000 Calibrator

Keep your Mindset calibrated

The Mindset Calibrator injects a very precise 16 Hertz, 50 microvolt signal simultaneously into all 16 channels of your Mindset. The MindMeld software reads this signal and calibrates itself to the Mindset hardware.



Simple calibration procedure

Simply load the special calibration scheme into your MindMeld software, select "Calibrate" from the Special Menu and start the scheme. Calibration is automatic!



MINDSET MS-1000 Calibrator

Why calibrate? In any piece of electronic equipment there are component tolerances which affect the behaviour of an electronic circuit, causing it to vary from ideal performance. For example, the manufacturer of a specific component rates that component at a certain value plus or minus 5%. Also, individual electronic components can "drift" a bit as they age. These small errors are cumulative as a signal makes its way through the circuit.

Although Mindset uses precision components, these component tolerance and aging issues can cause the amplifiers to vary by about 10% from the norm.

To compensate for these tolerances, the Mindset Calibrator injects a very precise 16 Hertz, 50 micro-volt signal into all 16 amplifiers. The MindMeld software reads the output from the amplifiers and calculates a correction factor (a scaler) to bring the amplifiers to the norm. These scalars are saved in the Windows System Registry. They may then be used by selecting "Use Calibration Scalars" from the Special menu in both the MindMeld Live Data Capture and MindMeld Analysis Functions programs.

SPECIFICATIONS

Calibration Signals

16 channels
16 Hertz \pm 1%, 50 μ V \pm 2%
Sinewave linearity: 99%

Warm up

Full precision after a 30 minute warm up

Power

110 volts, 60 Hertz input
100 milli-watts power consumption

Operational Temperature

32 to 90 degrees F.

Dimensions and Weight

5.25 inches deep, 5 inches wide, 1.5 inches high
weight: 16 oz

Warranty

The Mindset Calibrator is warranted to be free of defects that affect proper operation for a period of one year.

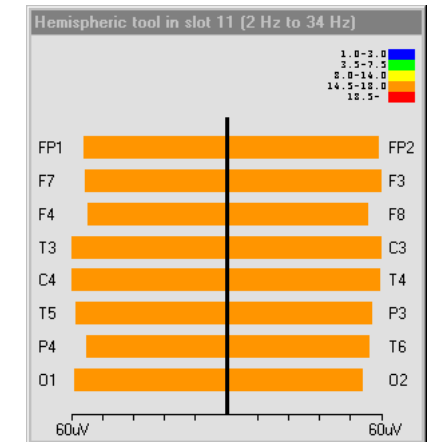
Free Adjustment

After one year your Mindset Calibrator may be returned for one free factory adjustment.

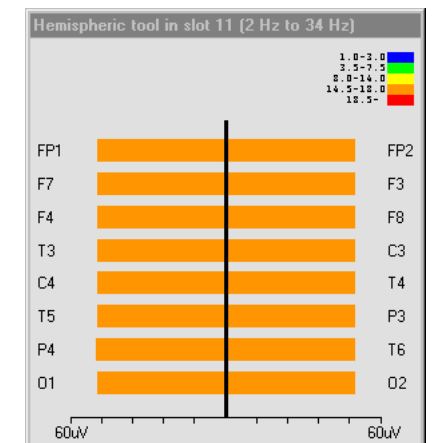
Price

The Mindset Calibrator is available from your distributor or directly from Nolan Computer Systems for \$249.

Calibration signal injected into a typical production Mindset. Note small amplification differences between the channels due to component tolerances:



The same signals following calibration. Note how the channels have been normalized:



Performing QEEG? The Mindset Calibrator helps quantify your data!

NOLAN
NOLAN COMPUTER SYSTEMS

303-816-1782

wayne@nolancomputersystems.com

MINDSET