

**INTRODUCING THE NEW STANDARD IN
AFFORDABLE TOPOGRAPHIC NEUROMAPPING:**

MINDSET MS - 1000

16 Channel Topographic Neuromapping Instrument

Mindset is a 16 channel Electroencephalographic (EEG) neuromapping system designed for use with a personal computer. Mindset combines topographic neuromapping and EEG analysis software with a 16 channel, 1024 samples-per-second 16 bit digital EEG acquisition instrument to provide a complete EEG neuromapping system.

Realtime Topographic Neuromap Rendering on PC

Mindset provides a comprehensive and intuitive suite of tools for understanding EEG in the temporal, spectral, and spatial domains. Features such as realtime topographic visualization, neurometric profile comparative analysis, compressed spectral array visualization, inter-electrode interpolation, metric report generation, and artifact removal integrate to provide a clear prospective of patterns in the EEG data.

An Open Standard

Mindset is based on a completely open software architecture. Third-party developers and end users have unlimited access to extend or customize Mindset. In addition, Mindset's data record format is an open and published standard.

In the Laboratory or in the Field

Mindset interfaces to the computer via SCSI, a standard that works as well with a desktop computer as it does with a notebook. An all aluminum enclosure, sized to match the footprint of a notebook PC, ensures durability and isolates Mindset from environmental interference.

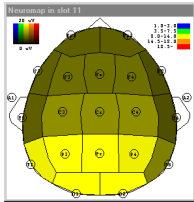


MINDSET MS-1000

Mindset was designed by Nolan Computer Systems for demanding field research. After years of continuous development and refinement, Mindset emerges onto the market as a robust and comprehensive tool for EEG study.

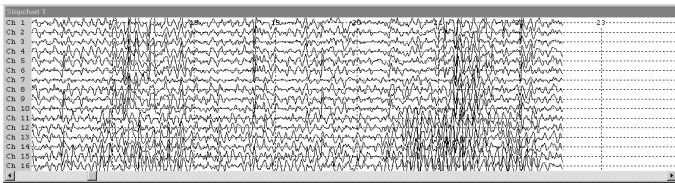
■ Realtime Topographic Neuromaps

Amplitude threshold and range are under user control.



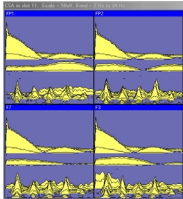
■ Strip Chart Waveform Display

Channels of interest, sweep rate, amplitude scale, trace color and background color are configurable on-the-fly.



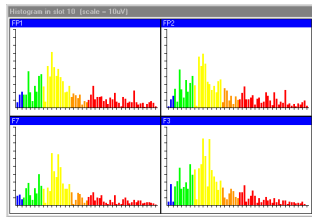
■ Compressed Spectral Array

Realtime visualization of spectral data with on-the-fly configuration of channels of interest, amplitude and screen layout.



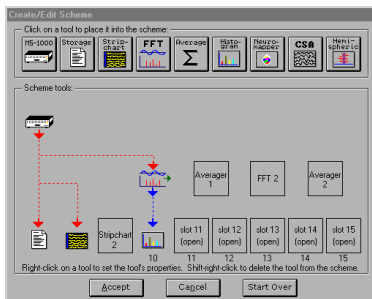
■ Spectral Histogram

User configurable realtime display with on-the-fly control of channels of interest, amplitude scale and channel layout.



■ Scheme Editor

Create unique schemes containing the tools most appropriate for the task at hand. Click and drag simplicity.



SPECIFICATIONS

■ Channels

16 differential input channels (32 input jacks)
Uses the new 1.5 mm touch-proof connectors

■ Resolution

16 bit analog to digital converter
64, 128, 256, 512 or 1024 samples/second/channel

■ Filtration

2 forth-order Sallen-Key active filters, 48 dB/octave roll-off
2 Hz - 34 Hz pass band

■ Common Mode Rejection

120 dB maximum, 100 dB typical 60 Hz rejection

■ Input Range

0 - 120 microvolts

■ Electrodes

Standard electrode inputs, compatible with
Electro-cap & e-Net

■ Montage Reference Configuration

User selectable through the Expansion Connector
Linked-ear Referential module supplied

■ Interface to Computer

SCSI (Standard Centronics 50 pin connectors)

■ Opto-Isolation

2500 volts RMS

■ Total Harmonic Distortion

-87dB
99.9% linearity in the opto-isolators

■ Calibration

Factory calibrated
Optional calibration certificate available
Optional calibration hardware available

■ Power

110/220 volts, 50/60 Hz input
15 watts power consumption

■ Operational Temperature

32 to 90 degrees F.

■ Dimensions and Weight

13 inches deep, 11.3 inches wide, 3.9 inches high
Main unit: 7 pounds External power supply: 2 pounds

■ Warranty

Mindset is warranted to be free of defects which affect proper operation for a period of one year.

■ System Requirements

Pentium Class running Windows 95/98/ME/NT.
SCSI interface, 8 megabytes of RAM, 20 megabytes of available hard drive space. For real-time neuromapping a processor speed of 133 Mhz or higher.

■ Optional Accessories

Gain variance module, calibration certificate, calibration hardware, SCSI interface card, Electro-cap.

NOLAN

NOLAN COMPUTER SYSTEMS

30540 Rand Road
Conifer, CO 80433
303-816-1782

wayne@nolancomputersystems.com

Copyright © 2001 Nolan Computer Systems. All Rights Reserved. Mindset is a trademark of Nolan Computer Systems. Features and specifications are subject to change without notice. Weights and measurements are approximate. Windows, Windows NT, Electro-cap and e-Net are trademarks of their respective trademark holders.

Mindset is not intended for use in clinical medical applications and is not FDA approved. Nolan Computer Systems makes no claims as to potential medical or therapeutic benefits from its use.